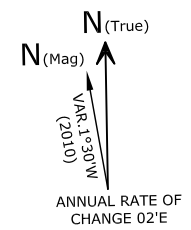
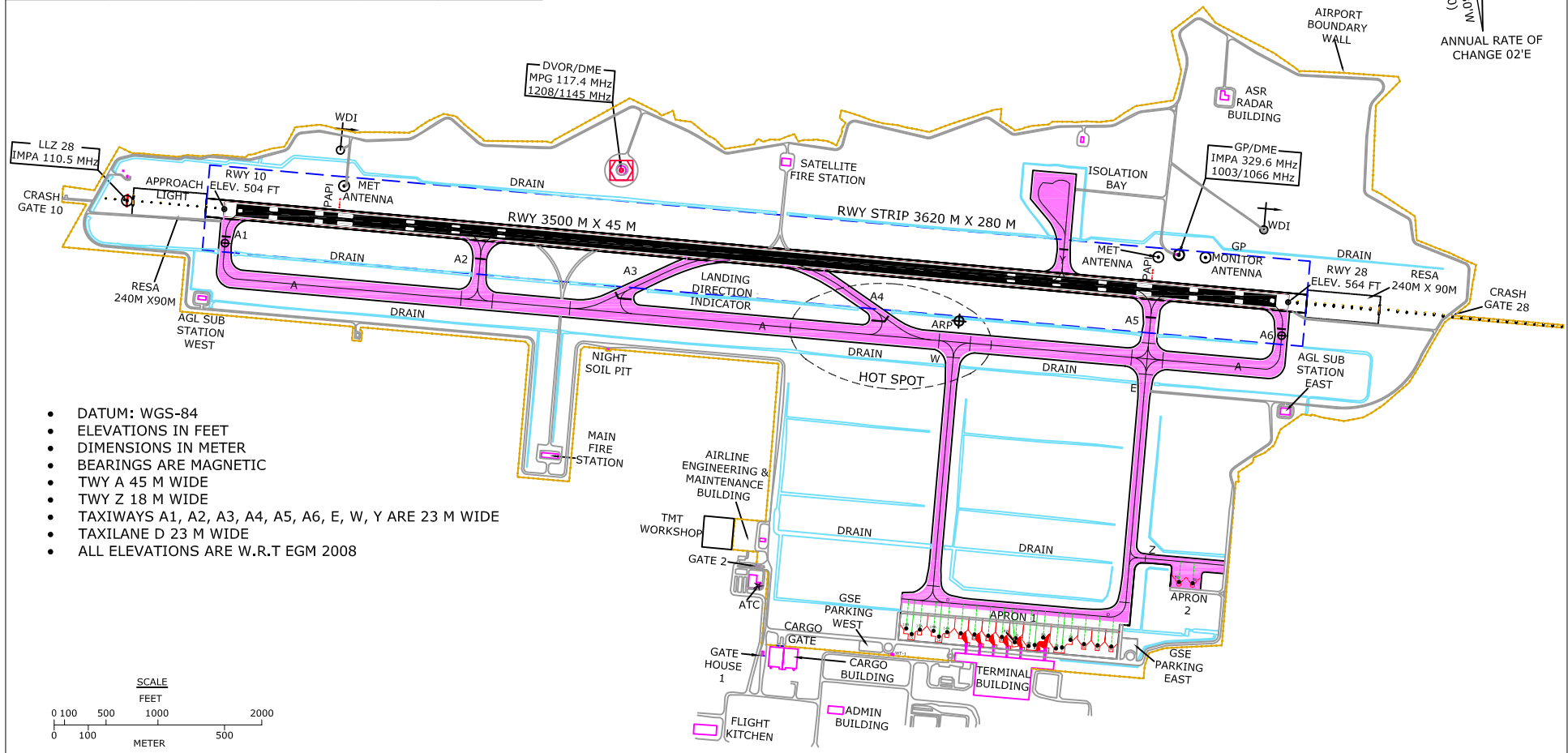
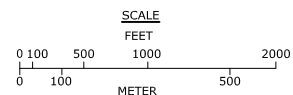


HOT SPOT CHART 15°44'32.997"N
073°52'01.238"E ELEV. 564 Ft TWR. 119.4 MHz GOA, INDIA
MANOHAR INTERNATIONAL
AIRPORT, MOPA

RWY	DIRECTION	THR. COORDINATES	THR. ELEV.	BEARING STRENGTH
10	096°	15°44'44.507"N 073°50'40.262"E	504 Ft	1021/F/AW/T
28	276°	15°44'35.194"N 073°52'37.465"E	564 Ft	1021/F/AW/T



- DATUM: WGS-84
- ELEVATIONS IN FEET
- DIMENSIONS IN METER
- BEARINGS ARE MAGNETIC
- TWY A 45 M WIDE
- TWY Z 18 M WIDE
- TAXIWAYS A1, A2, A3, A4, A5, A6, E, W, Y ARE 23 M WIDE
- TAXILANE D 23 M WIDE
- ALL ELEVATIONS ARE W.R.T EGM 2008



HOT SPOT (Pilots must exercise caution while crossing Hot spot)
HOT SPOT Intersection of TWY-A, TWY -A4 (RET) & TWY-W

DATE OF AERONAUTICAL INFORMATION JUL 2024.
GMR GOA INTERNATIONAL AIRPORT LTD.